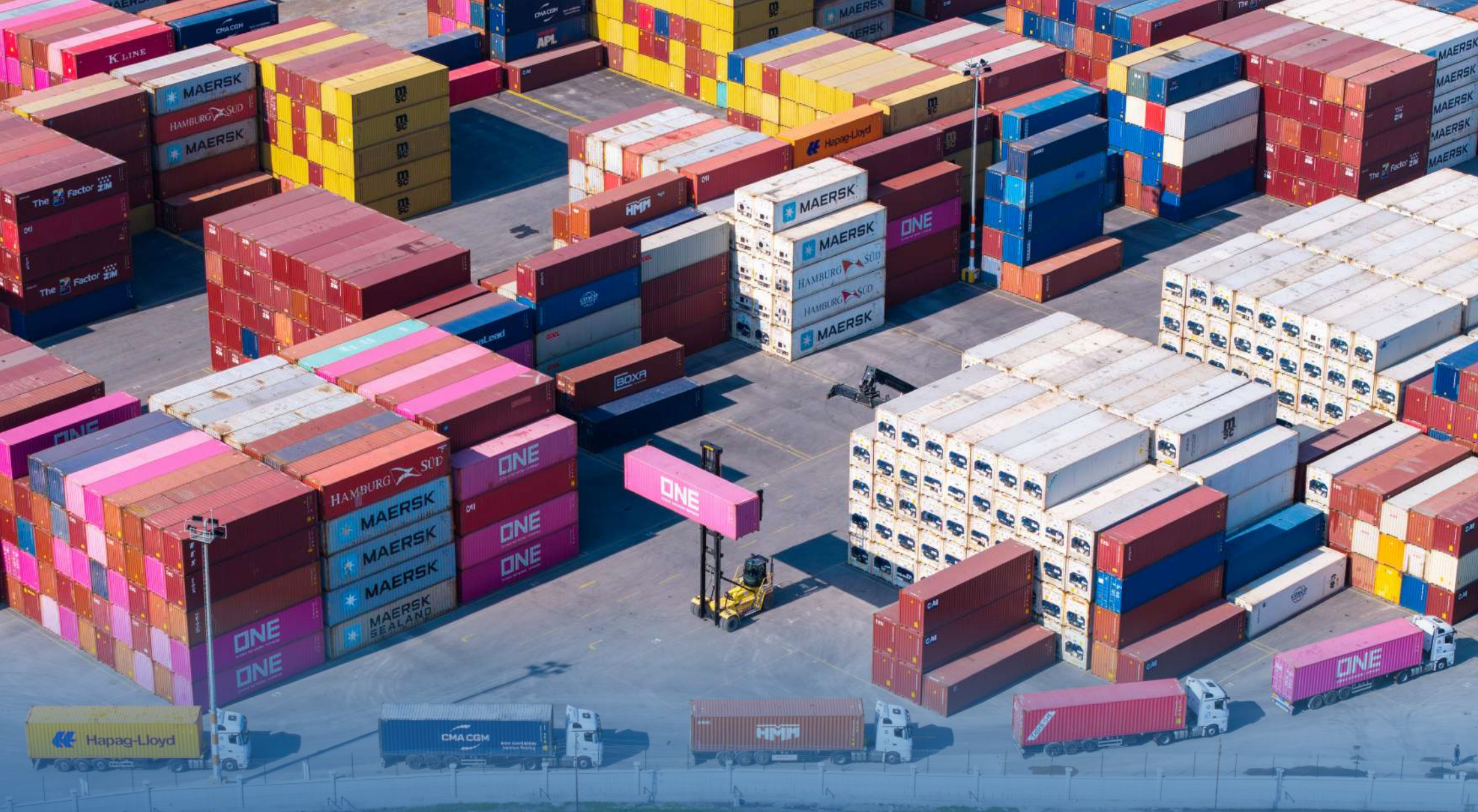




Global Liman Hizmetleri





International  
Standard  
Storage

Fast and  
Secure  
Transportation

Value-Added  
Solutions Tailored for  
Our Customers



# CONTAINER STORAGE SERVICES

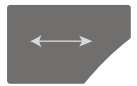
Where Quality Meets Trust



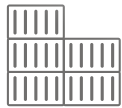


# Container Storage Services

GLH & LDH & Liman Lojistik group companies which have been steadily moving forward every year as one of the biggest supporters of the logistics sector especially in the Mediterranean region by providing quality and safe logistics operation services throughout Turkey. The group companies provides all kinds of logistics , port and terminal services in the container stacking and storage area with an annual handling capacity of 70.000 TEU on 225.00 m2 open area, as well as providing container transportation services in accordance with international standards with our 40 vehicles compatible with advanced logistics technologies.



225.00 m2  
Open Yard



Container  
Stacking  
Capacity of  
70,000 TEU



40 Trucks and  
40 Trailers

(180.000)

180.000  
Annual  
Movements





# Advantageous Location

GLH & LDH container storage / cargo handling land terminal, is only 8 km away from Mersin International Port (MIP) facility, 3 km away from 2nd and 3rd Mersin Organized Industrial Zones, 11 km away from Mersin 1st Organized Industrial Zone. This advantageous location minimizes the operating and transportation costs of our customers in terms of both location and ease of use due to the ability of transportation vehicles to enter and exit from the D-400 main road without entering the city center traffic.



**8**Km

Only to Mersin International Port (MIP) facility

**3**Km

To Mersin Organized Industrial Zones 2 and 3

**11**Km

To Mersin Organized Industrial Zone 1



An aerial photograph of a large container terminal. The terminal is filled with numerous stacks of shipping containers in various colors, including red, blue, yellow, and white. Many of the containers have logos for major shipping companies like Maersk, ONE, and Hapag-Lloyd. In the foreground, several semi-trucks are parked or moving, some carrying containers. A yellow forklift is visible in the middle ground, lifting a container. The terminal is situated next to a body of water, with a grassy area in the foreground.

# TERMINAL SERVICES

Where Quality Meets Trust





# Terminal Service

Our Land Terminal, provides uninterrupted service on a 365 days 7/24 basis with all kinds of cargo handling equipment, the latest system equipped machinery park and experienced personnel in the field of logistics,for the following services .





An aerial photograph of a large container yard. In the foreground, a row of ten white Mercedes-Benz trucks with different colored trailers (red, blue, yellow, green, white, pink, blue, grey, orange, and red) is parked on a paved surface. Behind them, hundreds of shipping containers are stacked in neat rows. The containers feature various logos, including MAERSK, COSCO SHIPPING, Hapag-Lloyd, HMM, Seaco, MSC, and Safmarine. The background shows a clear sky and some distant structures.

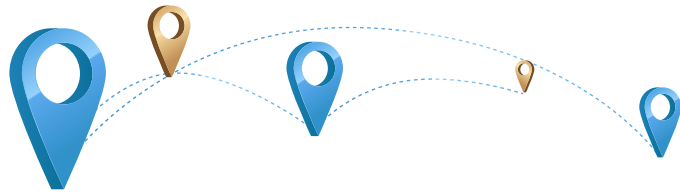
# TRANSPORTATION SERVICES

Where Quality Meets Trust





# Transportation Services



7/24 Service

7/24 GPS Tracking System

40 Trucks and  
40 Trailers

Container Transportation  
in Compliance with  
International Standards





# MACHINERY PARK



Where Quality Meets Trust





# Machinery Park

By closely following the latest technologies in logistics, we are making new investments and developing our extensive machinery in a planned manner.



4 Units 45 Ton  
KALMAR  
Reachstacker



3 Each 16 Ton  
Forklift



5 Each 15 ton  
HYSTER



1 Each 32 Ton  
Forklift



19 Each 5 Ton  
Forklift



40 Each  
Truck & Trailer



2 Units 10 Ton  
Lifting Capacity  
KALMAR



10 Each 3 ton  
Electrical  
Forklift



1 Each  
Sennebogen





# MODERN TECHNOLOGY AUTOMATION SYSTEMS

Where Quality Meets Trust





# Modern Technology Automation Systems



## Container Storage Control Systems

Our Land Terminal is at the service of our customers with container storage management, real-time container inventory tracking, high-precision location and quantity information software modules using customer communication programmes with wide digital band technology.



## Electronic Data Interchange (EDI) System

With our electronic data interchange (EDI) systems, we provide our customers with real-time access to container daily operation workflow data.



## GPS Transport Tracking Control System

We monitor our company truck& trailers with 24/7 GPS tracking systems and provide safe and fast container transport services to our customers.



# LOADING & UNLOADING SERVICES



Where Quality Meets Trust





# Loading & Unloading Services

By combining our professional teams with our machine park with today's technology, we carry out all kinds of cargo, equipment, vehicle, container loading and unloading works quickly and safely.

## We offer the following loading and unloading services to our customers

- ✓ Dry cargo, barrel, bale, full container (FCL) and partial container (LCL) loadings
- ✓ Container loading and unloading works
- ✓ Block, Crated and Banded Marble Loading
- ✓ Special design manufacturing methods (fixing, chocking, crating, chaining etc.)
- ✓ Rolled sheet, pipe and profile and all kinds of palletised loading





A large white ship hull is being lifted by several yellow slings at a shipyard. The hull is suspended in the air, and the slings are attached to its top edge. In the background, there are other ships and industrial structures, including a large white container with the word "ASIAN" on it. The scene is set in a harbor or shipyard area.

# LASHING & UNLASHING SERVICES

Where Quality Meets Trust



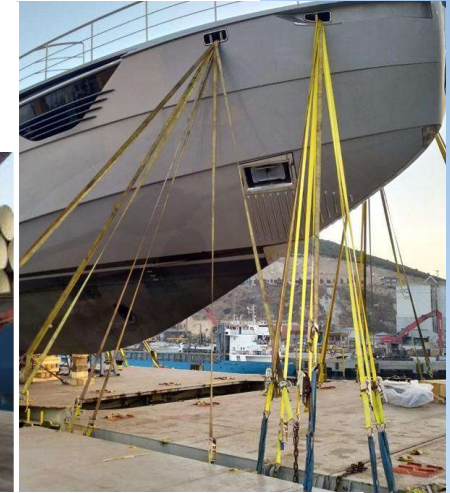


# Lashing & Unlashing Services

As GLH Global Port Services Ltd., lashing and unlashing operations are carried out by our expert teams at all ports in Turkey, in free zones, and at our customers' factories and warehouses, in compliance with international CTU standards, using certified materials.

For lashing operations, which require special knowledge and experience depending on the cargo, materials, and equipment, all materials and equipment to be used are carefully selected and pre-planned by our company. For lashing and unlashing works, we prepare certificates in accordance with international standards, and in our certificates, we also specify the technical specifications of all materials we use.

In addition to standard container, flatrack container, and open-top container types, our expert technical team completes services such as in-vessel & on-deck lashing, cargo securing and releasing, and container lock securing & releasing quickly and safely.





# COLD STORAGE SERVICES

Where Quality Meets Trust





# Cold Storage Services



On a 26,500 m<sup>2</sup>  
Land Area



4 Vehicle Loading  
and Unloading  
Ramps



A 3,000 m<sup>2</sup> Cold  
Storage Facility  
Equipped with  
the Latest  
Technology



Closed-Circuit Security  
Cameras, 24/7 Security  
Personnel, and a  
Modern Fire Protection  
System



14 Cold Rooms  
with a Total Cold  
Storage Volume  
of 10,300 m<sup>3</sup>



Thanks to the advantageous location of our GLH Cold Storage facility, we carry out our customers' operational tasks without time loss and in the shortest possible time.

8 km

Mersin  
International  
Port (MIP)  
Facility

3 km

Mersin Organized  
Industrial Zones  
2 and 3

11 km

Mersin Organized  
Industrial Zone 1

D400

Entry and Exit  
from the Main  
Road



# FLEXI TANK SERVICES

Where Quality Meets Trust





# Flexi Tank Services

Flexi Tank, box; It is a type of container that allows containers to be used as tank containers and is used for the transport of liquid vegetable oils, concentrated fruit juice and non-flammable liquid chemicals.

**18.000 - 26.000** Litres carrying capacity flexi tanks are an alternative to classical barrel and ISO Tank container loading, allowing more liquid cargo to be transported more cost-effectively.

We provide all necessary organisations for Flexi Tank operation services. We supply flexitanks in accordance with international standards (PAS 1008:2016, Container Owners Association Code of Practice) and specifications to our customers. The most important step of FlexiTank operations, the laying of Flexi Tanks in containers is carried out by our certified expert team with materials in accordance with international standards and transported to our customers' sunflower oil filling stations with our own truck & trailers and transported to Mersin Port after filling.







## Domestic Container Transportation

- 40 ADR-Certified Drivers
- K1 License
- SQAS Certificate
- 50 Contracted Suppliers
- 40 Trucks and Trailers



## Special Solutions

- Tarp-Covered Transportation
- IMO-Certified Cargo Transport
- Genset Trailer
- Flexi Tank Transportation



## Digital Solutions

- Kolay Soft
- Lojisoft Transport
- Vtek



# Sustainable Logistics



**WITH OUR SHEQ POLICY – VALUING PEOPLE,  
PRIORITIZING TRUST, RESPECTING THE  
ENVIRONMENT – WE PROTECT THE FUTURE**



# Service Quality Policy

**ASCERT**  
Certification

## SERTİFİKA CERTIFICATE

GLH GLOBAL LİMAN HİZMETLERİ  
ULUSLARARASI NAKLİYAT SANAYİ TİCARET  
LİMİTED ŞİRKETİ

BAHÇELİ KÜRKÇÜ MAHALLESİ BOYALIK CADDESİ NO:4/A AKDENİZ, MERSİN, TÜRKİYE

MEYVE SERBE İŞLEME VE PAKETLEME, SOĞUK HAVA DEPOCULUK HİZMETİ

PROCESSING AND PACKAGING OF FRUIT AND VEGETABLE, COLD STORAGE SERVICE

Kategori/Category: C/CII, G

### ISO 22000:2018

Gıda Güvenliği Yönetim Sistemi Standardının şartlarına uyan bir yönetim sistemi kurduğunu ve uyguladığını onaylamak üzere verilmiştir.  
to certify that food safety management system in accordance with standard's clauses is established and being implemented.

İlk Yayın Tarihi / Date of first issue : 28.07.2023  
Belge Tarihi / Date of issue : 10.07.2025  
Belge Periyodu / Certificate period : 3 Yıl/Years  
Sertifika Bitiş Tarihi / Release date : 27.07.2026  
Sertifika No / Certificate Number : Gİ.2023.3547

**ASCERT**  
Certification

Sertifika Onayı / System Certificate Approved

**ASCERT CERTIFICATION AND TRAINING SERVICES, LLC**  
501 KEOZ RD SUITE 101 LAW CLAYTON, DELAWARE 19702, U.S.A.  
Telp +1 302 2949451 E-mail: info@ascertllc.com

By certifying company: www.ascertllc.com address: limited address. (Validity of this certificate can be checked at www.ascertllc.com)

**ASCERT**  
Certification

## SERTİFİKA CERTIFICATE

GLH GLOBAL LİMAN HİZMETLERİ  
ULUSLARARASI NAKLİYAT SANAYİ TİCARET  
LİMİTED ŞİRKETİ

BAHÇELİ KÜRKÇÜ MAHALLESİ BOYALIK CADDESİ NO:4/A AKDENİZ, MERSİN, TÜRKİYE

MEYVE SERBE İŞLEME VE PAKETLEME, SOĞUK HAVA DEPOCULUK HİZMETİ

PROCESSING AND PACKAGING OF FRUIT AND VEGETABLE, COLD STORAGE SERVICE

IAF/EA Kod(Code): 03-35

### ISO 9001:2015

Kalite Yönetim Sistemi Standardının şartlarına uyan bir yönetim sistemi kurduğunu ve uyguladığını onaylamak üzere verilmiştir.  
to certify that quality management system in accordance with standard's clauses is established and being implemented.

İlk Yayın Tarihi / Date of first issue : 28.07.2023  
Belge Tarihi / Date of issue : 10.07.2025  
Belge Periyodu / Certificate period : 3 Yıl/Years  
Sertifika Bitiş Tarihi / Release date : 27.07.2026  
Sertifika No / Certificate Number : KQ.2023.3547

**ASCERT**  
Certification

Sertifika Onayı / System Certificate Approved

**ASCERT CERTIFICATION AND TRAINING SERVICES, LLC**  
501 KEOZ RD SUITE 101 LAW CLAYTON, DELAWARE 19702, U.S.A.  
Telp +1 302 2949451 E-mail: info@ascertllc.com

By certifying company: www.ascertllc.com address: limited address. (Validity of this certificate can be checked at www.ascertllc.com)

**ASCERT**  
Certification

## SERTİFİKA CERTIFICATE

GLH GLOBAL LİMAN HİZMETLERİ  
ULUSLARARASI NAKLİYAT SANAYİ TİCARET  
LİMİTED ŞİRKETİ

BAHÇELİ KÜRKÇÜ MAHALLESİ BOYALIK CADDESİ NO:4/A AKDENİZ, MERSİN, TÜRKİYE

MEYVE SERBE İŞLEME VE PAKETLEME, SOĞUK HAVA DEPOCULUK HİZMETİ

PROCESSING AND PACKAGING OF FRUIT AND VEGETABLE, COLD STORAGE SERVICE

IAF/EA Kod(Code): 03-35

### ISO 14001:2015

Çevre Yönetim Sistemi Standardının şartlarına uyan bir yönetim sistemi kurduğunu ve uyguladığını onaylamak üzere verilmiştir.  
to certify that environmental management system in accordance with standard's clauses is established and being implemented.

İlk Yayın Tarihi / Date of first issue : 28.07.2023  
Belge Tarihi / Date of issue : 10.07.2025  
Belge Periyodu / Certificate period : 3 Yıl/Years  
Sertifika Bitiş Tarihi / Release date : 27.07.2026  
Sertifika No / Certificate Number : CE.2023.3547

**ASCERT**  
Certification

Sertifika Onayı / System Certificate Approved

**ASCERT CERTIFICATION AND TRAINING SERVICES, LLC**  
501 KEOZ RD SUITE 101 LAW CLAYTON, DELAWARE 19702, U.S.A.  
Telp +1 302 2949451 E-mail: info@ascertllc.com

By certifying company: www.ascertllc.com address: limited address. (Validity of this certificate can be checked at www.ascertllc.com)






# References





# Our Addresses

-  **Office:** Camiişerif Mh. İstiklal Cd. Kuriş Ofis  
No:26 K:3 D:6 Akdeniz MERSİN
-  **Call Center:** +90 324 238 0922
-  **Email:** info@globallimanhizmetleri.com
- 

-  **Inland Terminal:** Mersin Bulvarı, Bahçeli  
Kürkçü Mahallesi,  
No:47/A Akdeniz MERSİN
-  **Operations:** info@globallimanhizmetleri.com
-  **Warehouse:** info@globallimanhizmetleri.com
-  **Phone:** +90 536 647 3375
- 

-  **Cold Storage Facility:** Bahçeli Kürkçü Mah. Boyalık  
Cad. No:26 Akdeniz MERSİN
-  **Phone:** +90 549 335 3332
-  **Email:** info@globallimanhizmetleri.com





Global Liman Hizmetleri